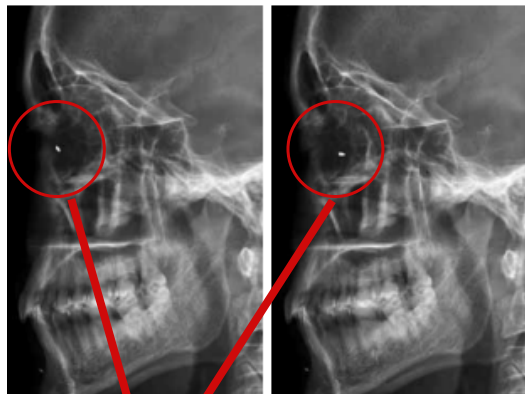


HSSE LESSON LEARNT

PENETRATING EYE INJURIES AT WORKPLACE

WHAT HAPPEN?

A 35-year old gentleman was referred to ophthalmic casualty after sustaining an injury to his left eye at work. He had been using a hammer and chisel, when a small part of the hammer broke off on impact and became a high-velocity missile that struck him on the upper eyelid. He subsequently complained of total loss of vision from that eye.



foreign body

HOW?

- No eye protection was worn at that time
- The employer doesn't enforce the use of eye protection or train the workers in how to use protection equipment.
- Potential eye injuries hazards were not identified before work
- Equipment used (hammer) was not in good condition



#NOKSELAMATSOKMO
FOR MYSELF | FOR MYFAMILY | FOR MYFUTURE
ZERO LTI, ZERO SPILL, ZERO HARM

LESSON LEARNT

- Before beginning any job task, we must understand what hazards are present and select the appropriate protection.
- This equipment must also be in good condition and fitted properly. Inspect your protective eyewear for any defects, such as scratched lenses, cracks or broken parts. If you discover any problems, replace them or have them repaired.
- Don't make the mistake of thinking that "it's too much trouble" or "it takes too much time" to protect your eyes from hazards.